

To compete today, you must...

- ✓ Work smarter, not just harder
- ✓ Create, manage, and use accurate library documentation
- ✓ Eliminate guessing which library part is correct
- ✓ Don't waste time matching components with library names
- ✓ Improve the overall quality of your workmanship
- ✓ Reduce manufacturing error rate and increase yield

We have the perfect solution for you!

LP Calculator

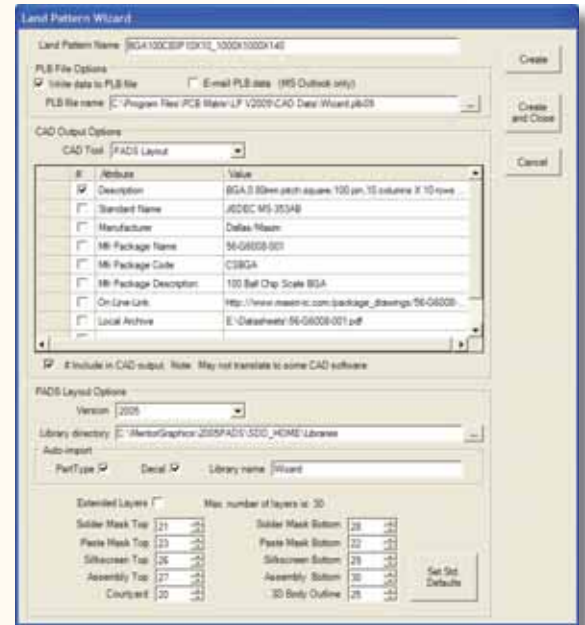
Quickly browse thousands of electronic components to find a match for your component data sheet. The LP Calculator will display the component, dimensions, land pattern, land pattern name, and links to the component manufacturer's website for the latest datasheet. Plus, it calculates land pattern geometries directly from component data. FREE from <http://www.PCBMatrix.com>!

LP Librarian

Has all the LP Calculator features, plus allows you to save, store, and reference component data to eliminate redundant work. Saved data can be shared with others using the free LP Calculator or any other LP software.

LP Wizard

Most comprehensive IPC-7351B LP software option, it has all features of the LP Calculator and LP Librarian. Parts are calculated and built for you automatically. The export option creates parts for Altium, Allegro, Board Station, CADSTAR, CR-5000, Eagle, Expedition, McCAD, OrCAD PCB Editor, OrCAD Layout, P-CAD, PADS, PADS ASCII, Pantheon, Pulsonix, Ultiboard, and more to come! Each LP Wizard license gets you access to corresponding standard IPC libraries at no extra charge!



The LP Wizard tool dovetails with the free library documentation and IPC-7351B LP Calculator, both provided by IPC with the IPC-7351B standard. One feature that really makes this product unique and powerful is that the data entered by a designer can be shared with engineers throughout the organization via the free IPC-7351B LP Calculator on a project-by-project basis. This tool will meet your company's long-term library documentation needs and increase product development efficiency by providing you compatibility with what the rest of the industry is using.

The LP Wizard will make PCB design more efficient in your organization. Single User and Site Licenses are available.

Visit www.PCBMatrix.com for a FREE 3 month license!



IPC - 7351B LP Wizard

Land Pattern Creation: Manual VS LP Wizard



Footprint Creation Tasks

MANUAL
Search web for datasheet
Calculate pad sizes
Place pads per datasheet specification
Draw/Create courtyard
Add component height
Draw/Create silkscreen
Draw/Create assembly outline
Draw/Create pin1 indicator
Add component fiducials if required
Add required attributes
Save land pattern to appropriate library

LP WIZARD
Search IPC-7351B Wizard for land pattern
If land pattern exists, export to CAD format
If land pattern doesn't exist, enter mechanical dimension component into the calculator
LP Wizard calculates land pattern and builds land pattern, silkscreen, assembly and Courtyard
Export land pattern to preferred CAD format

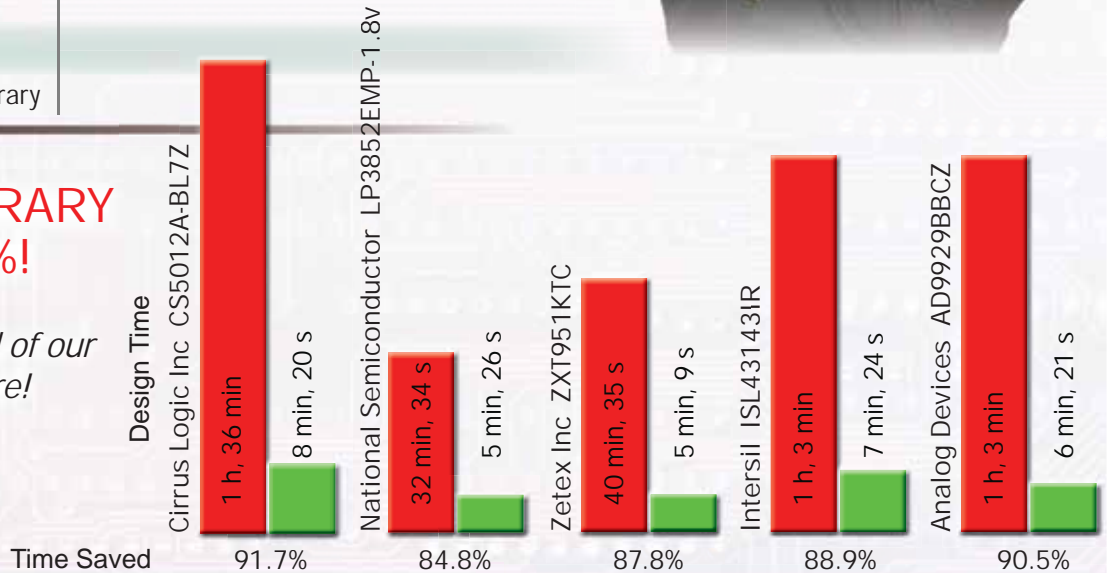
Dramatically increase your CAD Library productivity with our amazing software - Outputs to ALL major CAD formats!



REDUCED CAD LIBRARY TIME UP TO 91%!

Call for a free quote or trial of our award winning software!

847-298-9994



Time Comparison

MANUFACTURER PART #	LAND PATTERN NAME	Manual Design Time	LP Wizard Design Time	Time Saved	Percentage Time Saved
Analog Devices AD9929BBCZ	BGA100C80P10X10 1000X1000X140	1 h, 3 min	6 min, 21 s	56 min, 39 s	90.5%*
United Chemicon EMVE350ADA220MF55G	CAPAE660X550N	16 min, 15 s	9 min, 26 s	6 min, 49 s	43.8%
Panasonic ERJ-6ENF1001V	RESC2012X70N	23 min, 19 s	6 min, 54 s	16 min, 25 s	69.6%
Cirrus Logic Inc CS5012A-BL7Z	PLCC127P1752X1752X457-44N	1 h, 36 min	8 min, 20 s	1 h, 27 min	91.7%
Intersil ISL43143IR	QFN65P400X400X100-17L	1 h, 3 min	7 min, 24 s	55 min, 36 s	88.9%
Microchip Technology MCP6294-E/SL	SOIC127P600X175-14N**	39 min, 48 s	8 min, 47 s	31 min, 1 s	77.5%
National Semiconductor LP3852EMP-1.8	T0230P1003X238-3N**	32 min, 34 s	5 min, 26 s	27 min, 8 s	84.8%
Zetex Inc ZXT951KTC	XTAL1320X480X430N**	40 min, 35 s	5 min, 9 s	35 min, 26 s	87.8%
AVERAGE		46 min, 49 s	7 min, 13 s	39 min, 31 s	79.33%*

* Formula: (LP Time/Manual Time)*100-100

** Non-standard IPC LP

