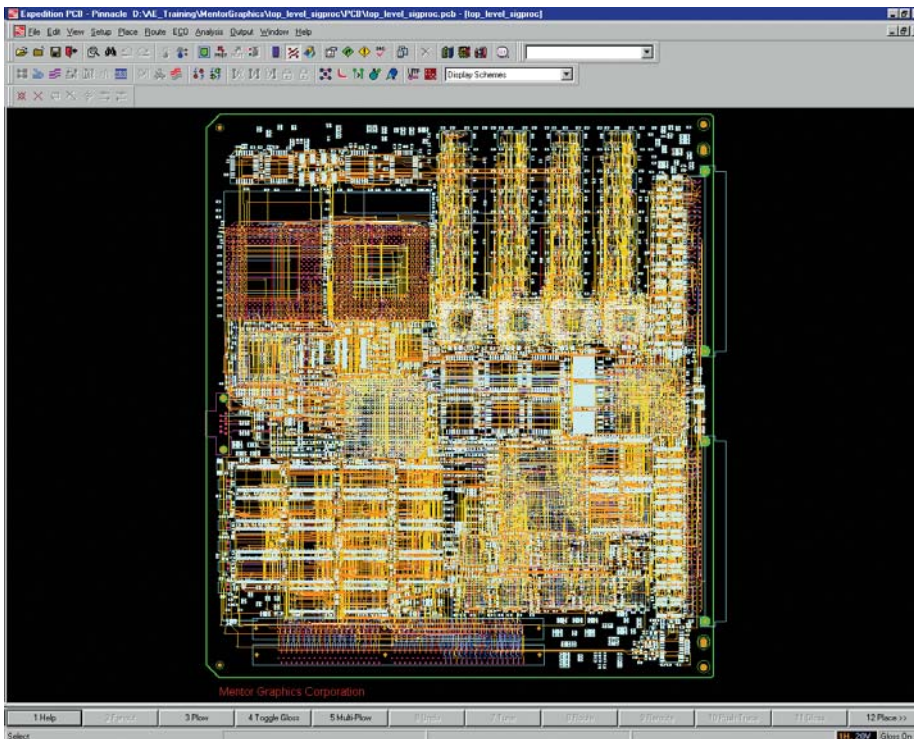


# Expedition PCB



*Expedition PCB is the technology leader for the creation of today's most complex PCB designs.*

## Major Product Benefits:

- Superior system integration reduces ECO completion times and eliminates synchronization errors
- The single, integrated, place and route editing environment of AutoActive technology reduces total design time and increases productivity
- Common database, user interfaces and rules drive productivity
- The correct-by-construction design methodology produces high-quality results with clean-up time eliminated
- Expedition PCB addresses your greatest design challenges including differential pair routing, net tuning, manufacturing optimization and microvia and build-up technology

## Expedition PCB — Powered by AutoActive Technology

Expedition™ PCB, powered by AutoActive® technology, is an integral part of the tightly integrated Expedition Series. By combining ease-of-use with advanced functionality, Expedition PCB offers designers the leading technology for the creation of today's most complex designs. Expedition PCB includes interactive and customizable multi-pass autorouting controls for design challenges such as differential pair routing, net tuning, manufacturing optimization and microvia and build-up technology.

## AutoActive — The Technology Leader in PCB Design

AutoActive technology represents a revolutionary step forward for PCB design. The power of industry-leading

autorouting technology is combined with interactive editing capabilities to produce a single, powerful and easy-to-use design environment. This environment eliminates the burdens of jumping between tools to get your job done and managing differences between the constraints on the autorouter and on interactive editing.

AutoActive provides designers with greater control than ever before, with the ability to easily switch between automatic and manual editing. From simple tasks, such as defining board areas, to complex procedures that involve maintaining high-speed signal conditions, all objectives are accomplished with the system and the designer working together in real time. The net result of AutoActive technology is reduced design times, increased productivity and unmatched design quality.

## What is AutoActive Technology?

- A single, integrated, place and route editing environment that reduces total design time and increases productivity
- All physical rules and high-speed rules are maintained
- Correct-by-construction design that produces high-quality results with clean-up time eliminated
- Shape-based, true 45 degree routing
- The most advanced autorouting technology ever. Stop and start the autorouter at any time and all results will be correct-by-construction
- Dynamic clean-up of traces through the reduction of segments, prevention of acute angles and application of pad entry rules

## Dynamic Area Fills

Expedition PCB automatically clears area fills around traces, vias and pads as the board is edited. Dynamic area fills are so fast, Expedition PCB allows you

to keep your area fills turned on while you are doing all your edits. Moving a via pushes and shoves other vias, traces and area fills and connectivity is automatically maintained.

## Rules By Area

Rules by area functionality greatly improves routing around BGAs and other fine-pitched parts. Rule areas represent complete rule sets that are obeyed by online and batch DRC and in interactive and automatic routing. Rule areas may be defined by layer and can be assigned to any polygon, rectangle or circle. Trace widths and clearances automatically change when traversing into or out of the rule area. You may also change via sizes and spans in a rule area to maximize route completion.

## Multiplow With Variable Via Patterns

Expedition PCB's multiplow functionality allows you to simultaneously

route multiple nets, including differential pairs, with true 45 degree routing. It can even handle routing through areas of staggered pins. Traces being routed will push and shove the other vias and traces out of the way and automatically clear area fills as needed. Changes can be easily made to a variety of selectable via patterns at the touch of a button, allowing enhanced flexibility for routing into dense areas of a design.

## Dynamic Hazard Review

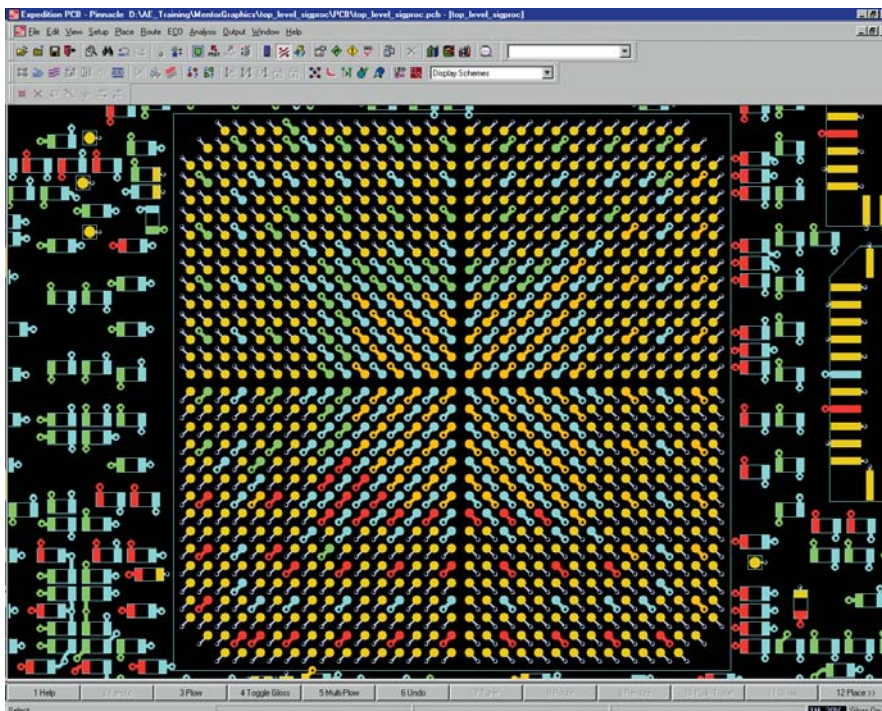
Design hazards are dynamically displayed and may be individually selected and colored for easy identification. When a hazard is fixed, it is dynamically removed from the hazard list.

## ECOs with Expedition PCB and the Expedition Series

ECOs (engineering change order) can cause delays and introduce errors in the design process. The Expedition Series makes ECOs less painful and more accurate than ever before. Expedition PCB's powerful automation and tight system integration drastically reduces ECO completion times and eliminates synchronization errors. You can change rules, replace parts and reroute automatically with no rule violations—all in real time.

## High-Speed Design with Expedition PCB

Designers today are increasingly challenged by the need to manage signal quality in order to achieve system performance and reduce prototype iterations. High-speed design with Expedition PCB is an integrated part of the AutoActive design environment.



Expedition PCB features market-leading technology for advanced interconnect.

## Constraint Definition

Expedition PCB handles an extensive set of constraints to meet high-speed performance requirements whether you're routing interactively or automatically. A common constraint definition environment is shared between schematic capture and layout, allowing the evaluation of critical signals at any design stage. Constraints include same layer and adjacent layer differential pairs, controlled impedance, net scheduling and delay.

## Net Tuning

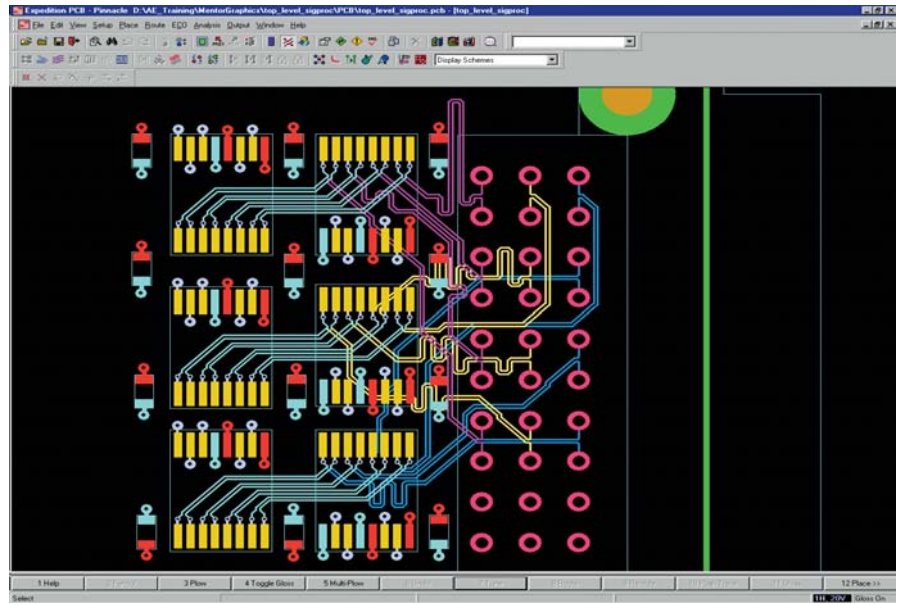
While routing interactively, graphic tuning aids are displayed for guidance. Nets modified out-of-tune during edits are automatically re-tuned. The Hazards dialog box dynamically updates as you edit nets, providing instant feedback relative to your constraints. Nets can also be tuned within an autoroute pass. Tuned nets are automatically maintained as you complete the design.

## Differential Pair Routing

Routing and editing differential pairs with Expedition PCB is accomplished with speed and ease that will change your view of high-speed design. Pair spacing rules can be established by both layer and net class. If one trace is edited, the other trace in the pair automatically moves with it. Adjacent layer differential pair routing capabilities add another valuable option for routing critical signals on a dense PCB.

## TeamPCB

TeamPCB allows multiple designers to work simultaneously on the same PCB layout design. For PCB designs that are too large or complex to



*Expedition PCB features powerful differential pair routing and net tuning capabilities for advanced high-speed design.*

complete in the desired time frame, TeamPCB enables collaboration across geographically dispersed or functionally organized PCB design groups, to maximize productivity and dramatically shorten design times. It is designed for immediate deployment and does not require time-consuming training or changes to a company's infrastructure or library to implement.

## Advanced Interconnect Routing

The challenges and of advanced interconnect are prevalent today with BGA, CSP, COB and DCA packages increasing board density. Build-up and microvia structures used in these board designs further complicate routing. Expedition PCB, powered by AutoActive technology, offers the leading technology for advanced interconnect designs.

Expedition PCB supports the definition of complex via structure rules and the routing of microvia geometries, including comprehensive via-in-pad rules. Via spans between any two layers

are possible. By moving beyond traditional laminate layer pairing, Expedition PCB facilitates the design of build-up structures on laminate to enable escape patterns from dense, high pin count devices. Build-up areas typically have a smaller clearance than the laminate beneath them. Expedition PCB can establish delay values and clearances per via span to address these issues. Additionally, Expedition PCB features true 45 degree routing for BGA fanout and staggered connectors, enabling localized rule definition to facilitate escape paths from dense areas.

## Design Reuse

The Design Reuse module creates and stores reusable blocks of circuitry, including schematic and PCB placement and routing data, in a central library. These blocks can then be placed and modified within the same design and across multiple designs. Design reuse automates this process and manages the design data to ensure error free databases and reduce the overall PCB design cycle time.

## Variant Management

The Variant Manager tool manages the creation of multiple product configurations from a single design database. Variant Manager's single-point ECO management minimizes errors, reduces costs, improves design quality and enhances production efficiency.

## RF Circuit Design with the IFF/Agilent ADS Interface

Many PCB designs, such as cell and handheld phones, incorporate RF circuitry. RF layout design and simulation is a specialized function that is generally carried out in dedicated point tools. With the IFF/Agilent ADS Interface, RF data that is designed, simulated and verified in Agilent's ADS product can be directly imported to and exported from the Design Capture™, DesignView™ and Expedition PCB tools, ensuring that the databases are synchronized and data integrity is maintained.

## CAM Output Manager

The creation of manufacturing data and the distribution to production sites introduces challenges at a point in the design process where errors can become very costly, in terms of time and dollars. CAM Output Manager provides automated and customizable

creation and distribution of manufacturing data that results in increased quality, accuracy and design throughput. The data generation process of CAM Output Manager ensures verified consistency and accuracy and eliminates the potential for costly errors. CAM Output Manager enhances the existing output capabilities of Expedition PCB and supports existing CAM methodologies such as Gerber, ATE and AIS Drill. In addition, CAM Output Manager's variant design support reduces output creation time and increases distribution accuracy.

## Solutions for New Customers

For new customers, a wide range of services are available to ease the transition to the Expedition Series, including design-ready and high-quality libraries, interfaces to popular front-end tools, design translators and translation services. Whatever your need, Mentor Graphics can help you to get productive quickly.

## Hardware Requirements

- Pentium® III or higher  
Memory: 256 MB RAM

## OS Requirements

- Windows XP Professional, Windows NT® 4.0 or Windows 2000®

**To learn more about how Expedition PCB can improve your PCB layout process, call Mentor Graphics to schedule a complete product demonstration or visit our web site at [www.mentor.com/expedition](http://www.mentor.com/expedition) for the latest product news.**

Copyright © 2002 Mentor Graphics Corporation.

Mentor Graphics and AutoActive are registered trademarks and Design Capture, Design View, TeamPCB and Expedition are trademarks of Mentor Graphics Corporation.

All other trademarks mentioned in this document are trademarks of their respective owners.

Corporate Headquarters  
Mentor Graphics Corporation  
8005 SW Boeckman Road  
Wilsonville, OR 97070-7777  
Phone: 503-685-7000

Sales and Product Information  
Phone: 800-547-3000  
503-685-8000

Silicon Valley Headquarters  
Mentor Graphics Corporation  
1001 Ridder Park Drive  
San Jose, California 95131 USA  
Phone: 408-436-1500  
Fax: 408-436-1501  
North American Support Center  
Phone: 800-547-4303

Europe Headquarters  
Mentor Graphics Corporation  
Deutschland GmbH  
Arnulfstrasse 201  
80634 Munich  
Germany  
Phone: +49.89.57096.0  
Fax: +49.89.57096.400

Pacific Rim Headquarters  
Mentor Graphics (Taiwan)  
Room 1603, 16F  
International Trade Building  
No. 333, Section 1, Keelung Road  
Taipei, Taiwan, ROC  
Phone: 886-2-87252000  
Fax: 886-2-27576027

Japan Headquarters  
Mentor Graphics Japan Co., Ltd.  
Gotenyama Hills  
7-35, Kita-Shinagawa 4-chome  
Shinagawa-Ku, Tokyo 140  
Japan  
Phone: 81-3-5488-3030  
Fax: 81-3-5488-3021



Printed on Recycled  
Paper

JC-06-03

1016450